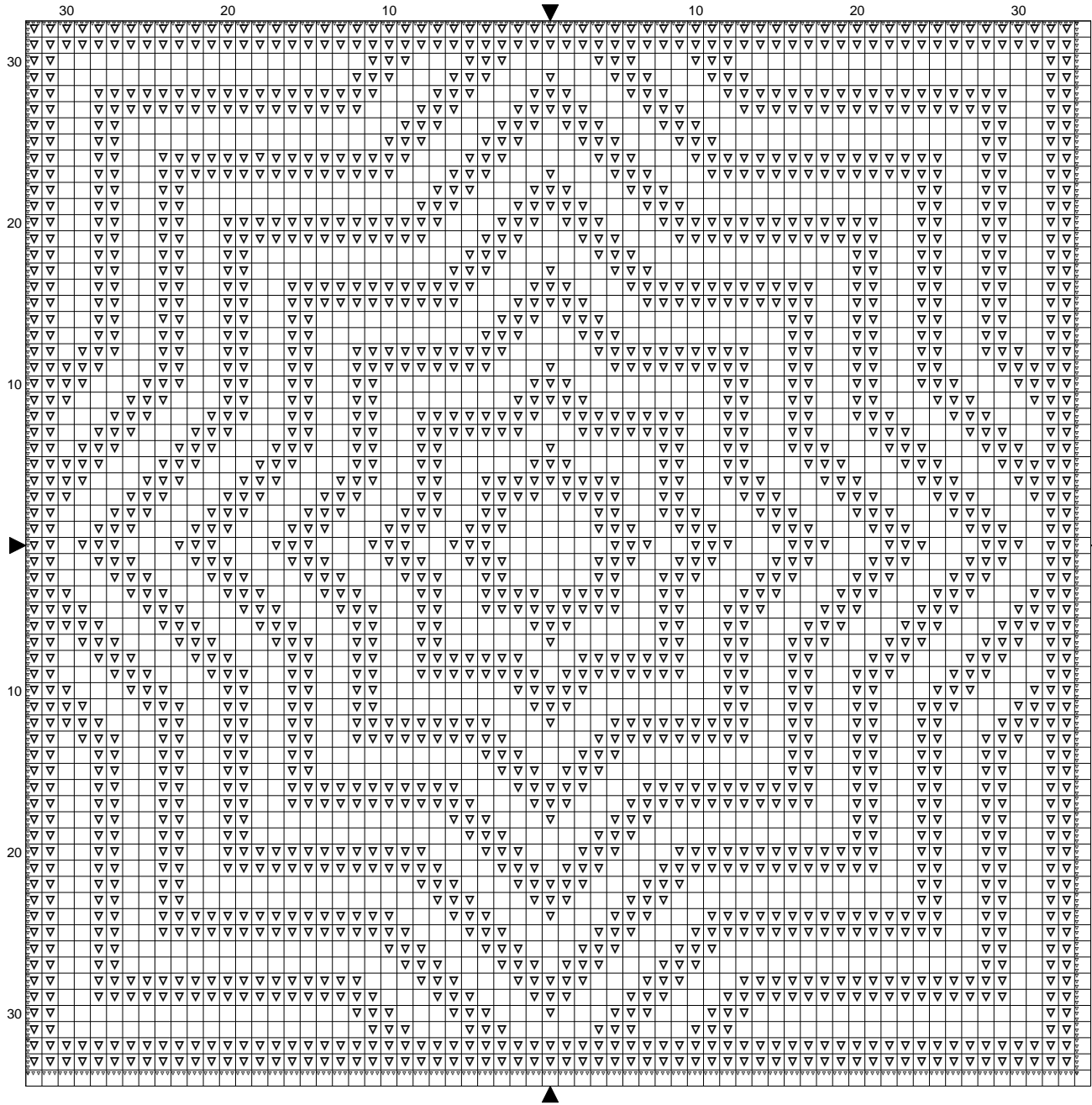


Chevron Biscornu Side 1



Design size: 3.61 x 3.61 inches or 9.17 x 9.17 cm
Pattern from www.etsy.com/shop/Pokenta



Instructions and Symbol Key for Design "Chevron Biscornu Side 1"

Fabric: 18 count White Aida

Stitches: 65 x 65 **Size:** 3.61 x 3.61 inches or 9.17 x 9.17 cm

Colours: DMC

Use 2 strands of thread for cross stitch

<u>Sym</u>	<u>No.</u>	<u>Colour Name</u>	<u>Sym</u>	<u>No.</u>	<u>Colour Name</u>
▽	3750	Deep petrol blue			

Use 2 strand of thread for backstitch

▽▽▽▽▽	DMC 3750	Deep petrol blue
-------	----------	------------------

This chart has been designed and printed with our best intentions of being without mistakes. However, the possibility of human error, printing mistakes or the variation of individual stitching does exist, and we regret that we cannot be responsible for this.

Visit www.etsy.com/shop/Pokenta for more patterns like this one!

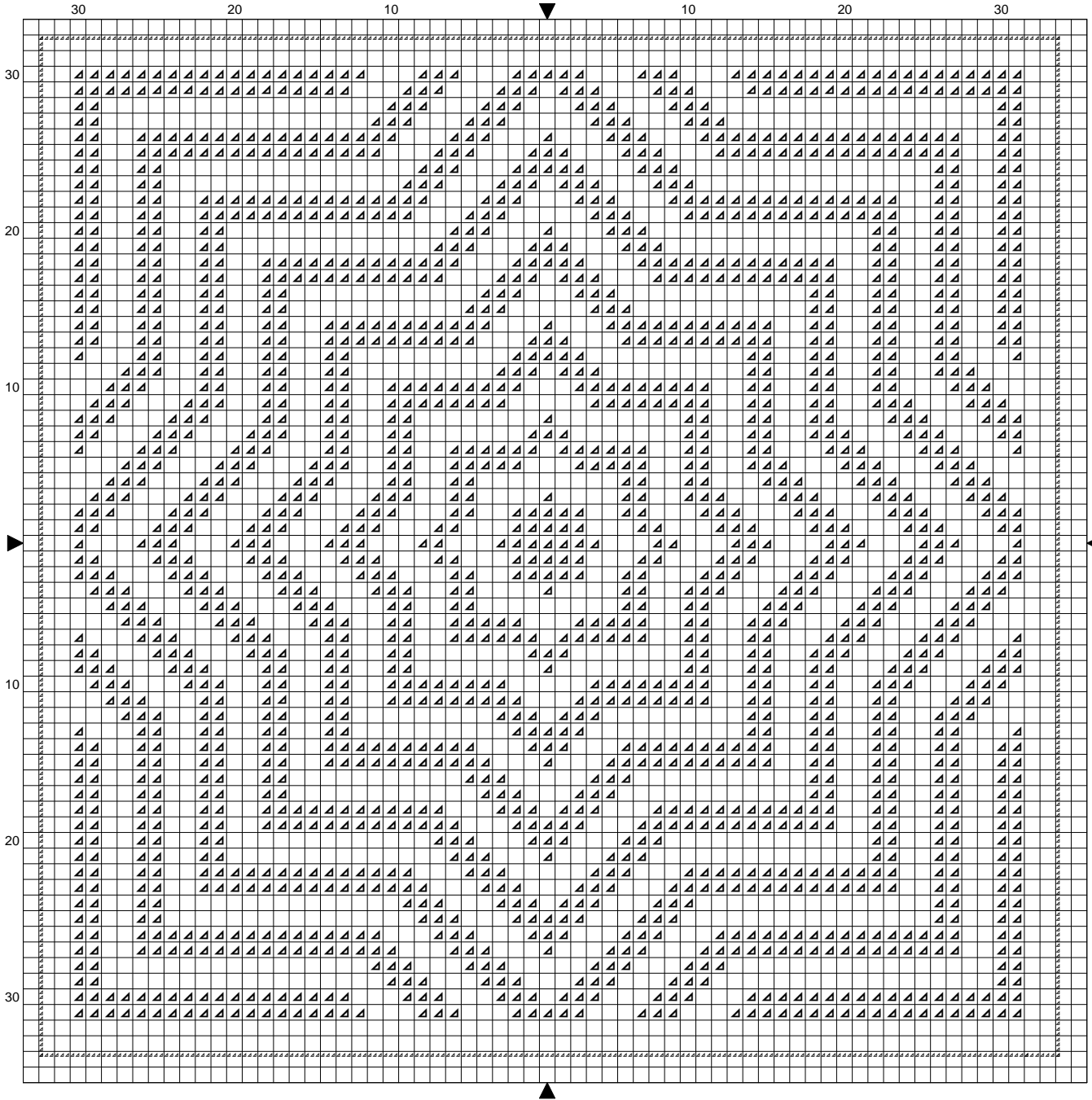
Copyright © Suzanne Day 2015 All rights reserved.

Chevron Biscornu Side 2



Design size: 3.61 x 3.61 inches or 9.17 x 9.17 cm

Pattern from www.etsy.com/shop/Pokenta



Instructions and Symbol Key for Design "Chevron Biscornu Side 2"

Fabric: 18 count White Aida

Stitches: 65 x 65 **Size:** 3.61 x 3.61 inches or 9.17 x 9.17 cm

Colours: DMC

Use 2 strands of thread for cross stitch

<u>Sym</u>	<u>No.</u>	<u>Colour Name</u>	<u>Sym</u>	<u>No.</u>	<u>Colour Name</u>
▲	3750	Deep petrol blue			

Use 2 strand of thread for backstitch

▲▲▲▲▲	DMC 3750	Deep petrol blue
-------	----------	------------------

This chart has been designed and printed with our best intentions of being without mistakes. However, the possibility of human error, printing mistakes or the variation of individual stitching does exist, and we regret that we cannot be responsible for this.

Visit www.etsy.com/shop/Pokenta for more patterns like this one!

Copyright © Suzanne Day 2015 All rights reserved.